

T-2 Finding Missing Angles

Use the trig table on the other side to find each angle to the nearest degree.

1. $\sin 0.5878 = \underline{26^\circ}$

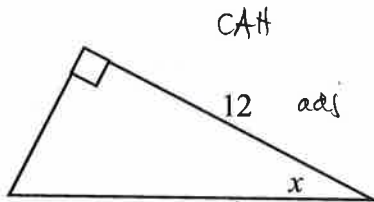
(2)

2. $\tan 2.356 = \underline{67^\circ}$

(2)

Use trigonometry to find the missing angle. Round to the nearest degree.

3.



13 hyp

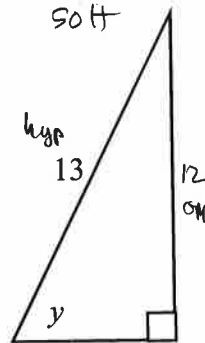
$$\cos x = \frac{12}{13}$$

$$\cos x = .9231 \quad x \approx 22.6$$

$$x \approx 23^\circ$$

(3)

4.

hyp
1312
opp

$$\sin y = \frac{12}{13}$$

$$\cos y = .9231$$

$$y = 22.6$$

$$y \approx 23^\circ$$

(3)